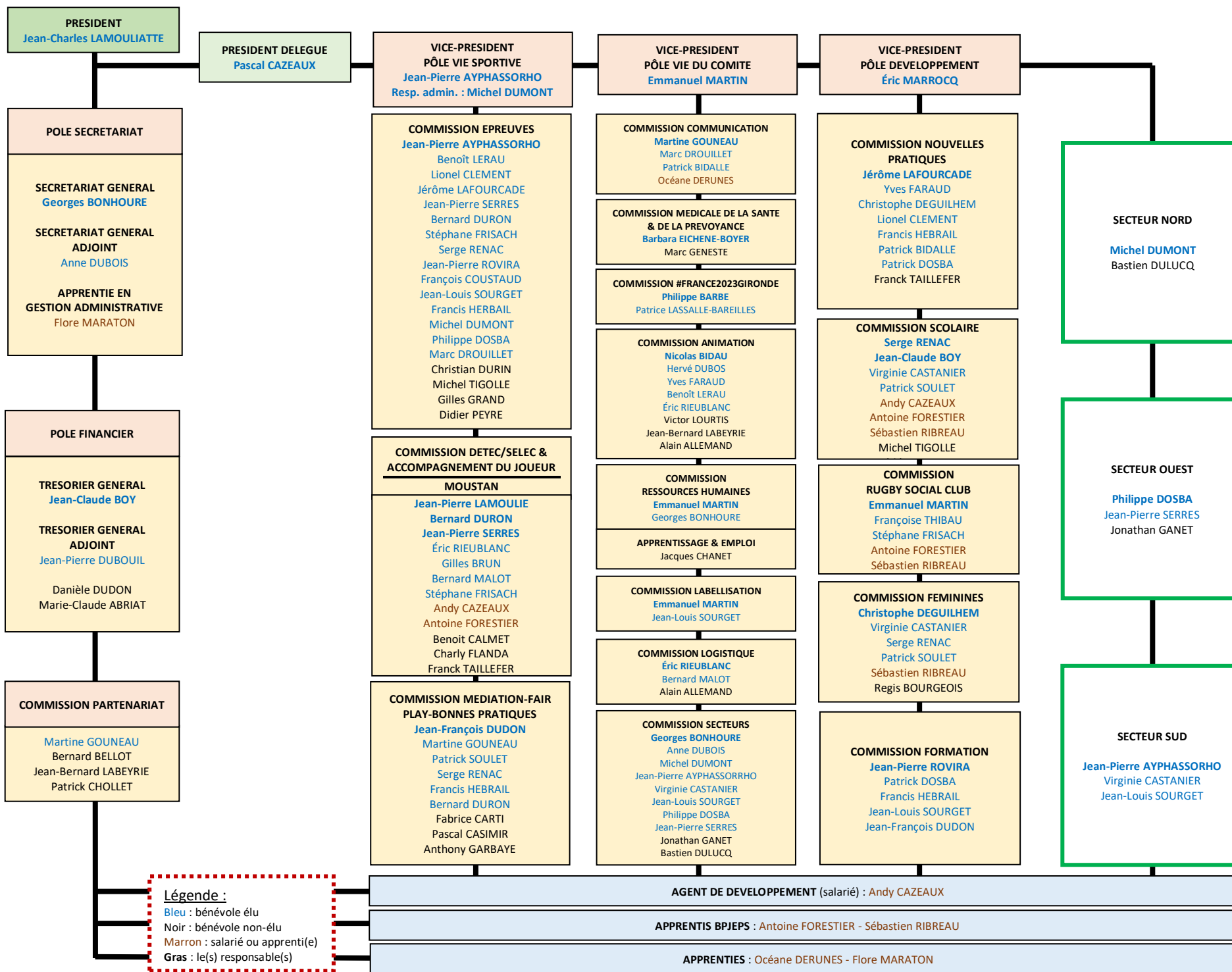




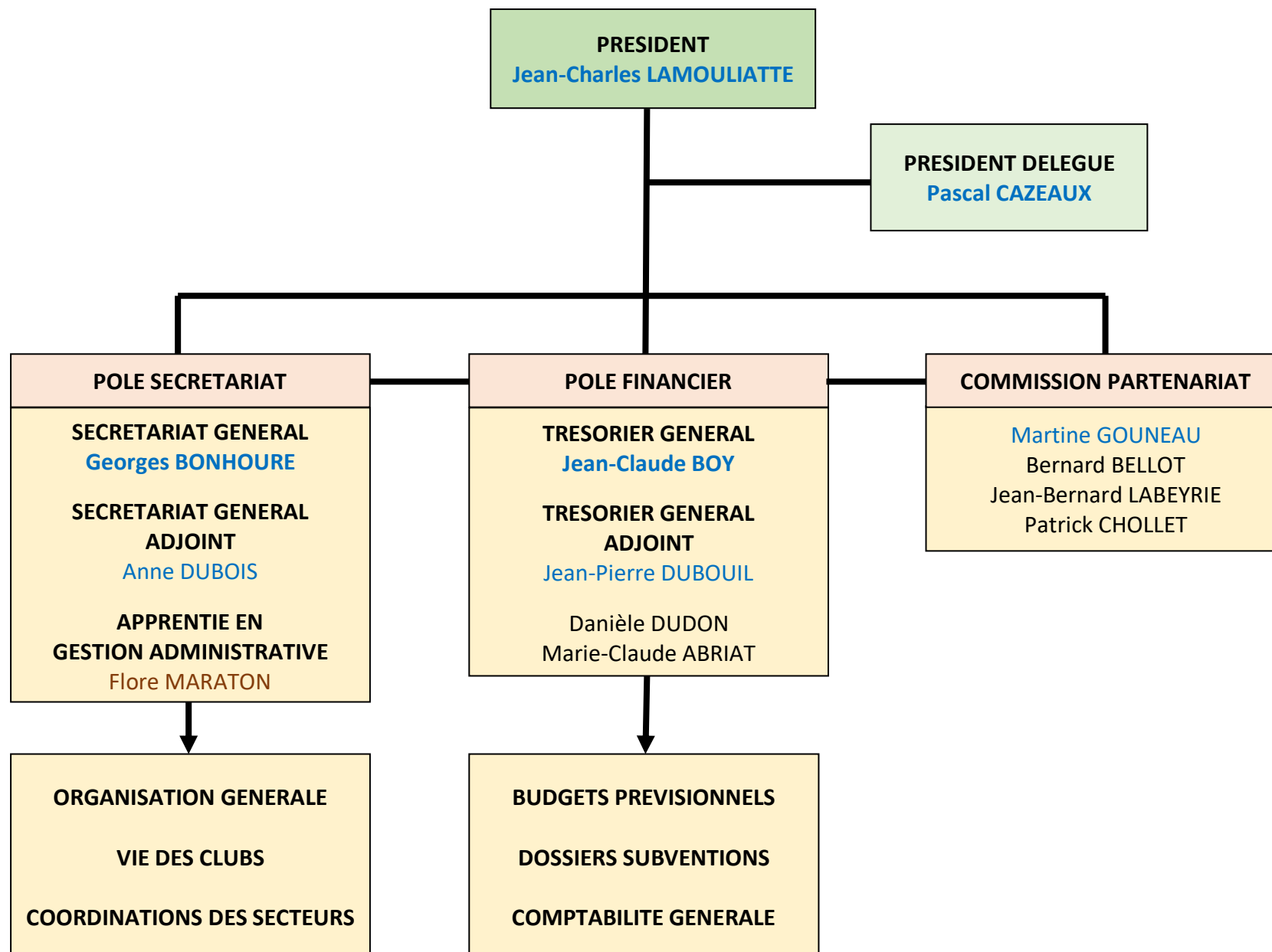
www.cd33rugby.com

ORGANIGRAMME CD33 RUGBY 2020-2024



Légende :
 Bleu : bénévole élu
 Noir : bénévole non-élu
 Marron : salarié ou apprenti(e)
 Gras : le(s) responsable(s)

DETAILS DES PÔLES PRESIDENCE, SECRETARIAT, TRESORERIE :

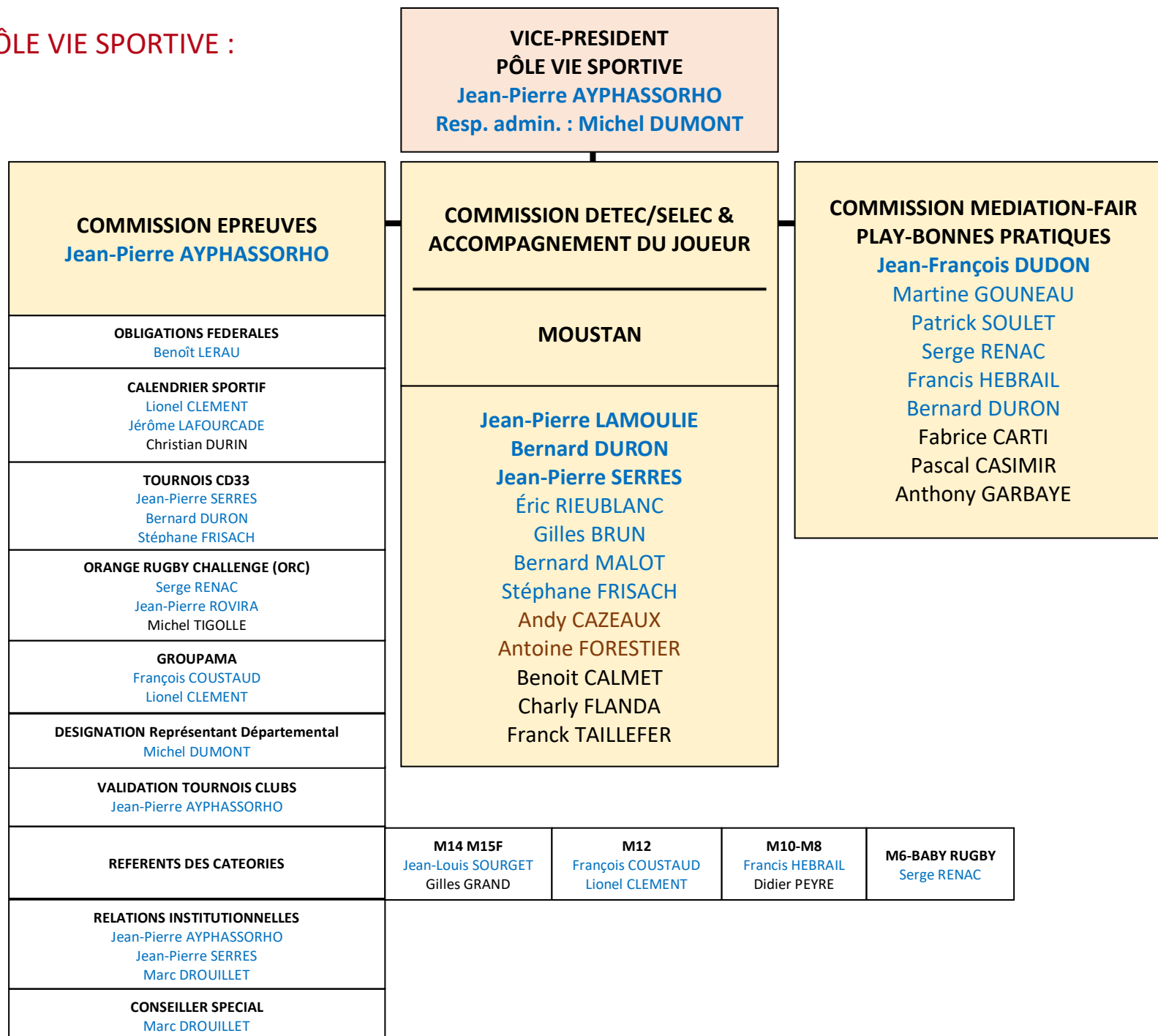


DETAILS DU PÔLE VIE SPORTIVE :



www.cd33rugby.com

ORGANIGRAMME CD33 RUGBY 2020-2024

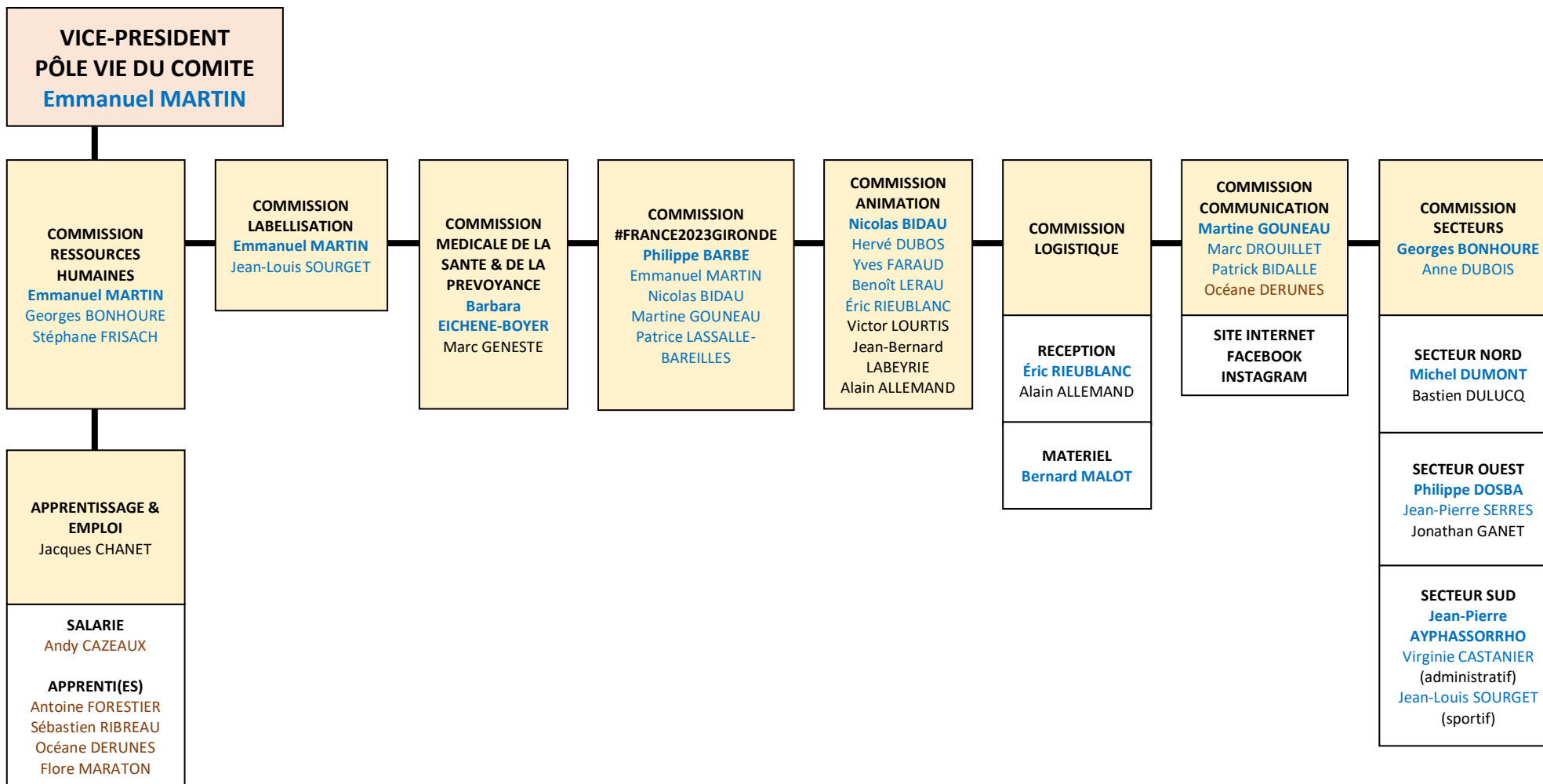


DETAILS DU PÔLE VIE DU COMITE :



www.cd33rugby.com

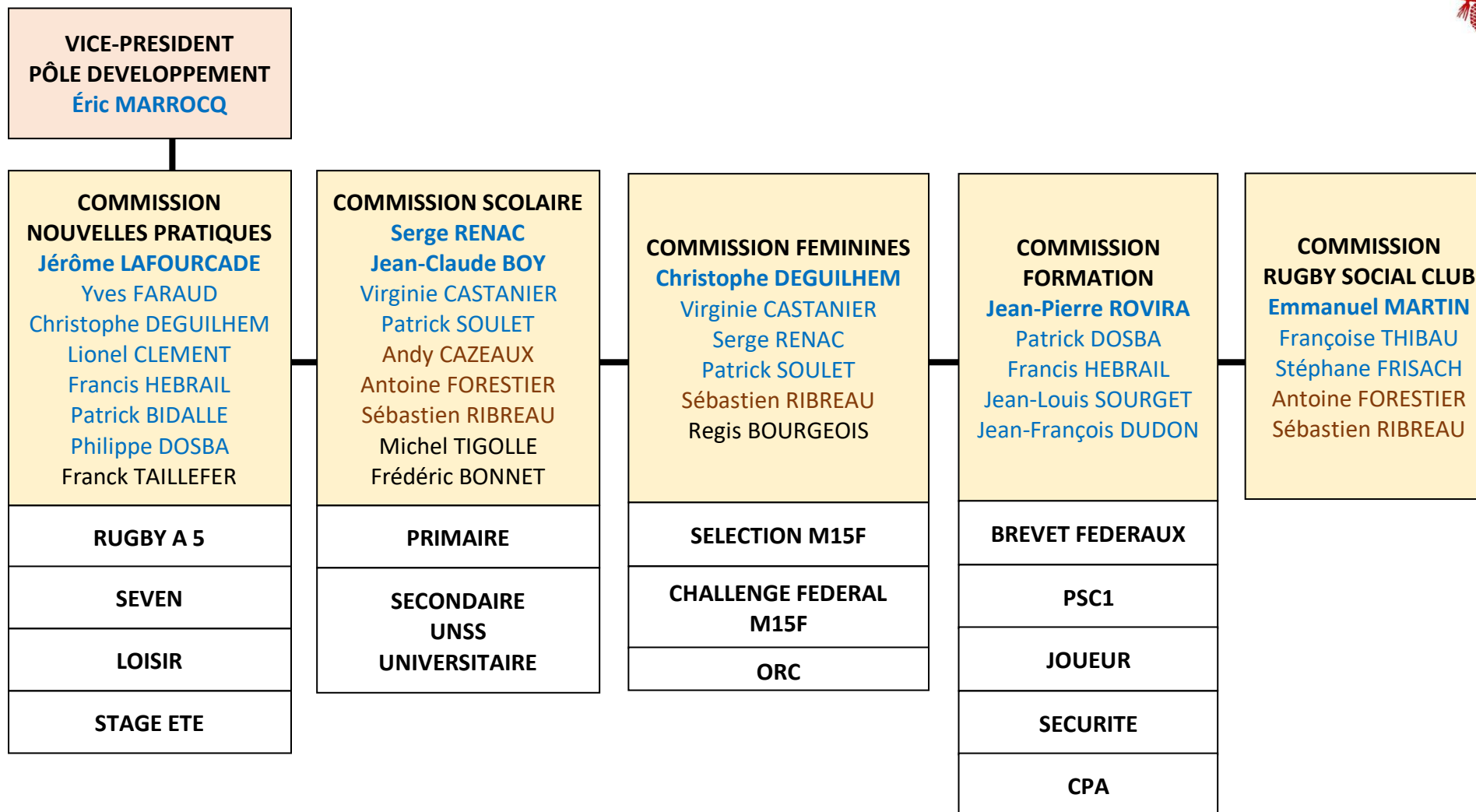
ORGANIGRAMME CD33 RUGBY 2020-2024



DETAILS DU PÔLE DEVELOPPEMENT :



www.cd33rugby.com



ORGANIGRAMME CD33 RUGBY 2020-2024